

PLANNING  
PUBLIC POLICIES  
COORDINATION

Planning is a basic management function that involves prior decision making on what to do, when to do it, how to do it, and who will do it. Planning helps us align what we want to achieve with the resources we have at our disposal and get the best possible result.

Public policies are measures which the Government introduces in response to the needs of society in order to regulate those areas of our lives which are in the public interest. It is in the public interest for health services to be efficient and patient-oriented, education to be modern, high-quality and competitive, to have more employment opportunities, a more productive economy, science more related to the economy and contributing to innovative concepts, and for the public administration—as a service to citizens—to provide even better services.

PLANNING  
PUBLIC POLICIES  
COORDINATION



GOVERNMENT OF THE REPUBLIC OF SERBIA  
PUBLIC POLICY SECRETARIAT

**Address:**  
Vlajkovićeva 10, 11000 Belgrade  
**Mailing address:**  
Nemanjina 22-26, Belgrade  
**Contact us at:**  
office@rsjp.gov.rs  
**Or call us:**  
+381 (011) 33 49 818

[www.rsjp.gov.rs](http://www.rsjp.gov.rs)

This publication is produced with the assistance of the European Union. The contents of this publication are the sole responsibility of the Public Policy Secretariat of the Republic of Serbia and may in no way be taken to reflect the views of the European Union.

PLANNING  
COORDINATION  
PUBLIC POLICIES  
PLANNING  
PUBLIC POLICIES  
COORDINATION



Republic of Serbia



GOVERNMENT OF THE REPUBLIC OF SERBIA  
PUBLIC POLICY SECRETARIAT



#EY  
3A TEBE

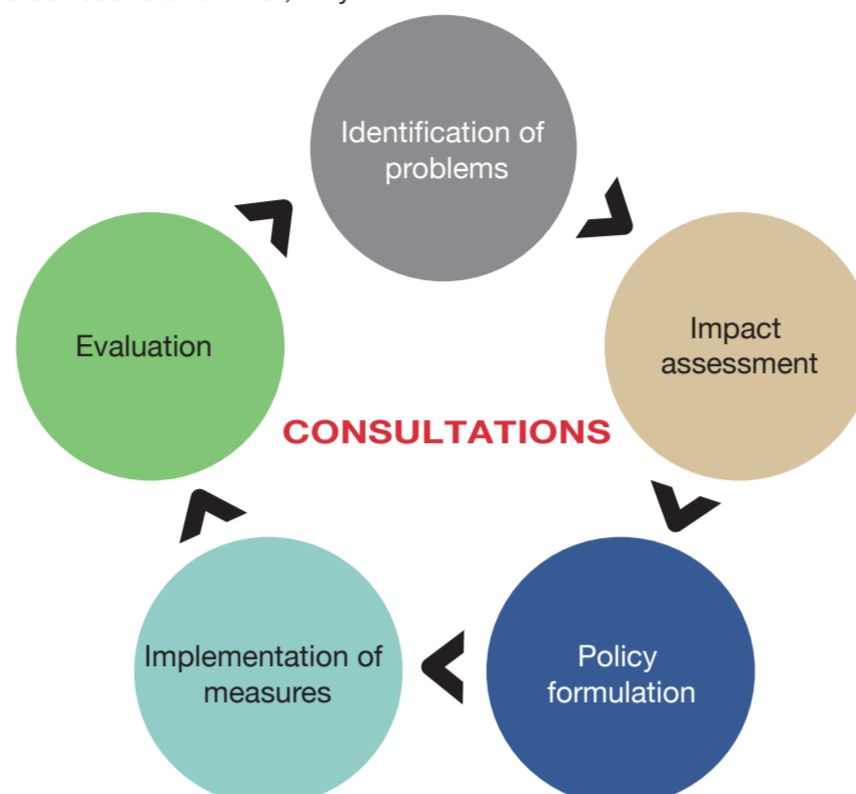
PLANNING  
PUBLIC POLICIES  
COORDINATION

Coordination is the harmonious functioning of the segments of the whole that give effective results. It is the ability to manage and coordinate segments of a system and activities, and to direct them towards a common goal.

# WHAT DO WE DO?

## The PPS and Public Policy Development

- 1. Identification of problems based on facts and data**—The line ministry or stakeholders launch an initiative to establish a public policy. At the same time, all relevant data are collected, and a consultative process is launched with the target groups who will be affected by the implementation of a given public policy participating in it.
- 2. Impact assessment**—prior (ex-ante) analysis of the effects of public policy aims to determine the strengths and weaknesses of the considered policy options, i.e. costs and benefits for the budget, economy, society, environment and public administration.
- 3. Policy formulation**—through a selected public policy document (strategy, programme, action plan, policy concept).
- 4. Implementation of measures**—the most important part of public policy life in which what is planned is implemented in order to achieve the objectives.
- 5. Evaluation** (or performance assessment)—subsequent (ex-post) impact assessment of policies shows whether the implemented measures gave the expected results and if not, why.



# WHO ARE WE?

The **Public Policy Secretariat (PPS)** provides expert support to the Government and the public administration in public policy planning, development, implementation monitoring and coordination, and the implementation of regulatory reform. Our role is to ensure that public policies are well planned, mutually aligned, efficient and aiming at citizens and their needs.

The basic functions of the **PPS** include:

1. support in planning and coordination of public policies,
2. support in the development of public policies through the preparation of economic analyses,
3. quality control of public policies and regulations,
4. improvement and modernisation of the process of creating public policies through the application of innovative methods,
5. citizens' and businesses' initiatives.

The PPS is a special organisation which was established in April 2014 as part of the public administration reform. Its competencies are regulated by the Law on Ministries of the Republic of Serbia and the Law on the Planning System and other regulations.

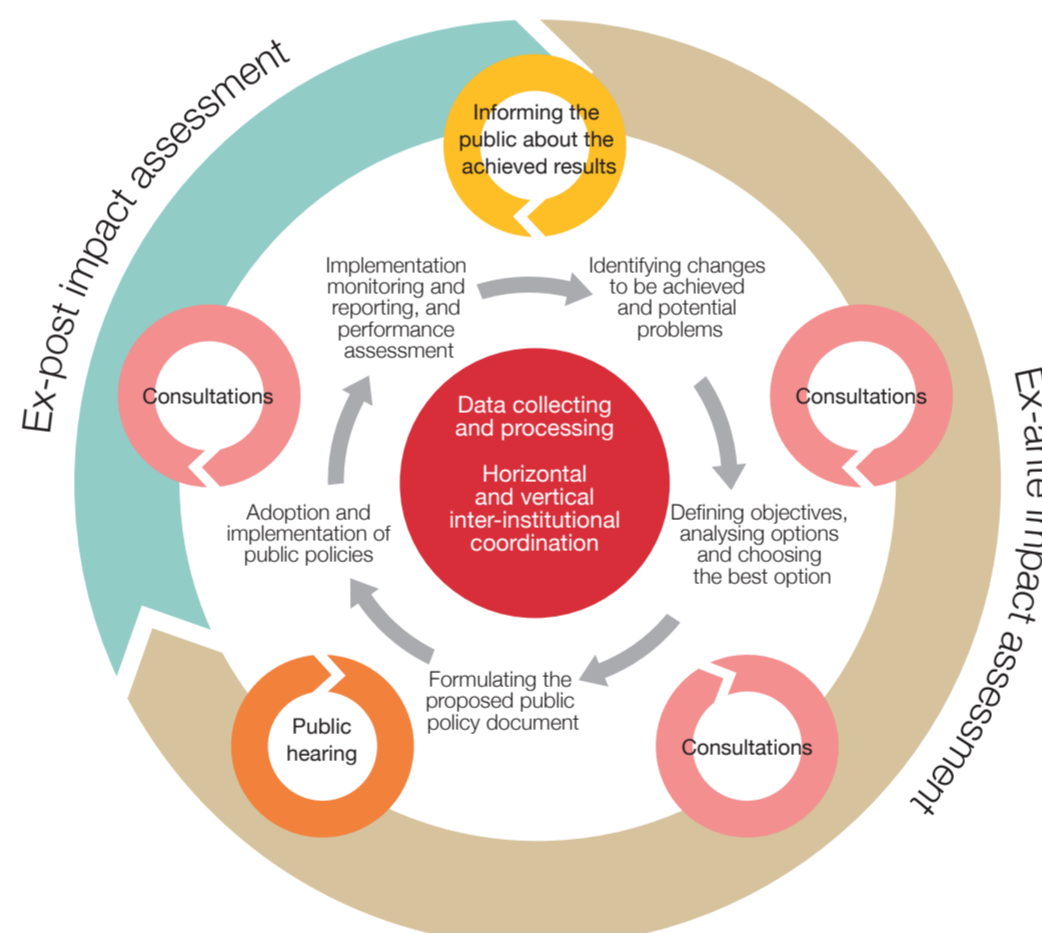


## The PPS and Public Policy Management

Public policy management is a continuous process that involves connecting all the segments and the actors of the planning system into a single unit, which we call the public policy management cycle.

Before the end of one cycle, a new cycle begins, and its management must be based on data and facts.

Successful public policy management implies good coordination, application of a standardised methodology and transparency in the preparation and the implementation of planning documents. Transparency implies continuous consultations with stakeholders and target groups, during the definition stage and during the stage of implementation of the public policy and the document by which it is implemented. It is also important, at all stages of the public policy management cycle, to collect data that will be important when conducting the impact assessment and planning in the next cycle. To achieve the desired change in society, it is extremely important to link the process of public policy management with the budget cycle and financial management in the Republic of Serbia.



# HOW DO WE DO IT?

Our reform activities are aimed at changing the culture in public administration, developing critical thinking, focusing on results, focusing on citizens as active participants in creating public policies, in order to reach an agreement as a society on how to achieve the desired changes and a better life for all citizens.

## Reform activities we have been implementing:

- Application of the Law on the Planning System of the Republic of Serbia with accompanying regulations on public policy management and medium-term planning at all levels,
- Provision of professional support to public administration bodies in the process of developing public policies,
- Involvement of the research community and analysts outside the public administration in the policy-making process,
- Establishment of a Unified Information System for planning, coordination and monitoring of public policy implementation,
- Strengthening of the analytical capacities of the public administration and/or introducing analytics units in all ministries,
- Capacity building of employees in public administration and local self-government through an extensive training programme and introduction of analytics units in all ministries,
- Establishment of an analytics service for local self-government units in order to support better planning at the level of local self-government units,
- Introduction of innovative methods in policy making.

## The PPS implements reforms based on:

- assessments of regulations' and public policies' impact,
- simplification of administrative procedures with the aim of reducing costs—**e-Paper**,
- collection and processing of initiatives of business entities and citizens to change inefficient regulations and procedures,
- establishment of the Unified Public Register of Administrative Procedures for Businesses and Citizens as well as other requirements for doing business in Serbia.

# WE COORDINATE:

- **Action Plan for the Implementation of the Government Programme (APIGP)**—regular reporting to the Government on monitoring the implementation of results and achieving the priority objectives set out in the Prime Minister's presentation, and coordination in the preparation of the annual report,
- **Economic Reform Programme (ERP)**—coordination of the preparation of the segment of the document related to structural reforms and preparation of diagnostics of the situation in individual areas of competitiveness,
- **Other development documents, such as the Smart Specialisation Strategy.**

# WE CONTRIBUTE TO:

- **United Nations Sustainable Development Goals**—mapping of the strategic framework of the Republic of Serbia based on the UN Sustainable Development Goals and their integration into Serbia's Development Agenda,
- **Combating the grey economy**—providing expert support to the Working Bodies of the Government in the preparation of the Programme for the implementation of the National Programme for the Suppression of the Grey Economy,
- **Erasmus + project**—the PPS is a partner in an EU project aimed at designing and implementing programmes for public administration courses, analysis and policy making; the lifelong-learning programme is intended for civil servants and graduate students,